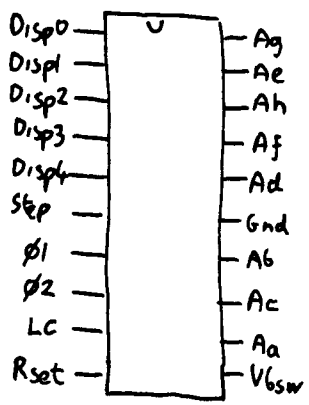


# HP65 Keyboard / Display

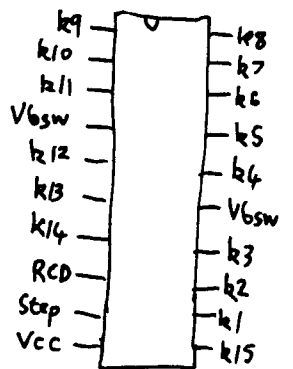
Anode Driver  
1820-1029



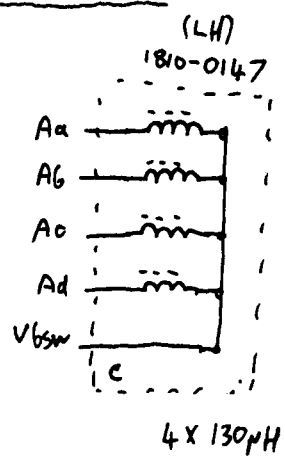
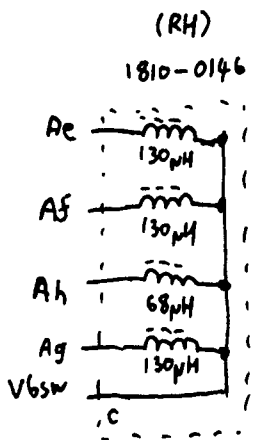
## Logic - Keyboard/Display Pins

- LHS ↑
- o Disp0
  - o Disp1
  - o Disp2
  - o KC1
  - o Disp3
  - o Disp4
  - o HDS
  - o WPS
  - o MTRS
  - o phi1
  - o KC2
  - o V6sw
  - o phi2
  - o Gnd
  - o Vcc
  - o P6Msw
  - o KC3
  - o KR1
  - o KR2
  - o KR3
  - o KC5
  - o KR4
  - o KC4
  - o KR5
  - o KR6
  - o KR7
  - o KR8
  - o RCD

Cathode Driver  
1820-1226



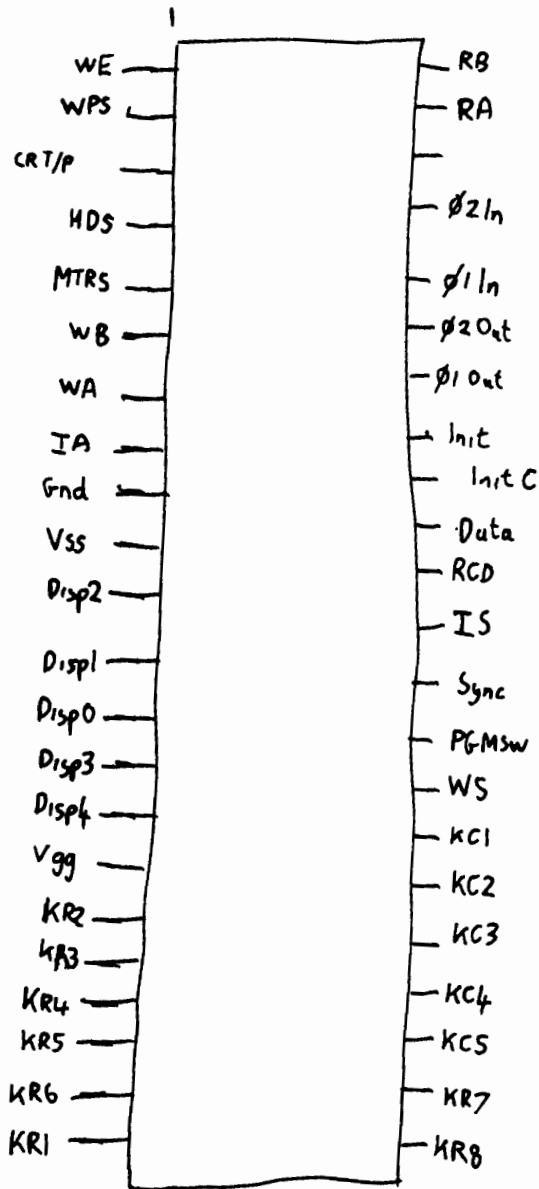
## Inductor modules



# HP65 Logic

## HP65 CPU Hybrid

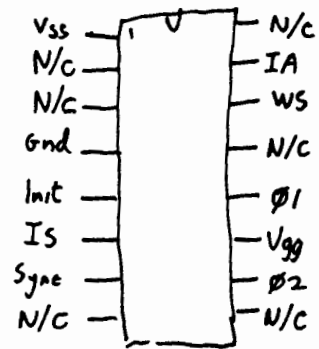
60218-00065



Contains:  
 Control + Timing  
 Arithmetic + Registers  
 Card Reader Control  
 2X RAM  
 clock Buffer + Init

1818-0073  
 1818-0074  
 1818-0075

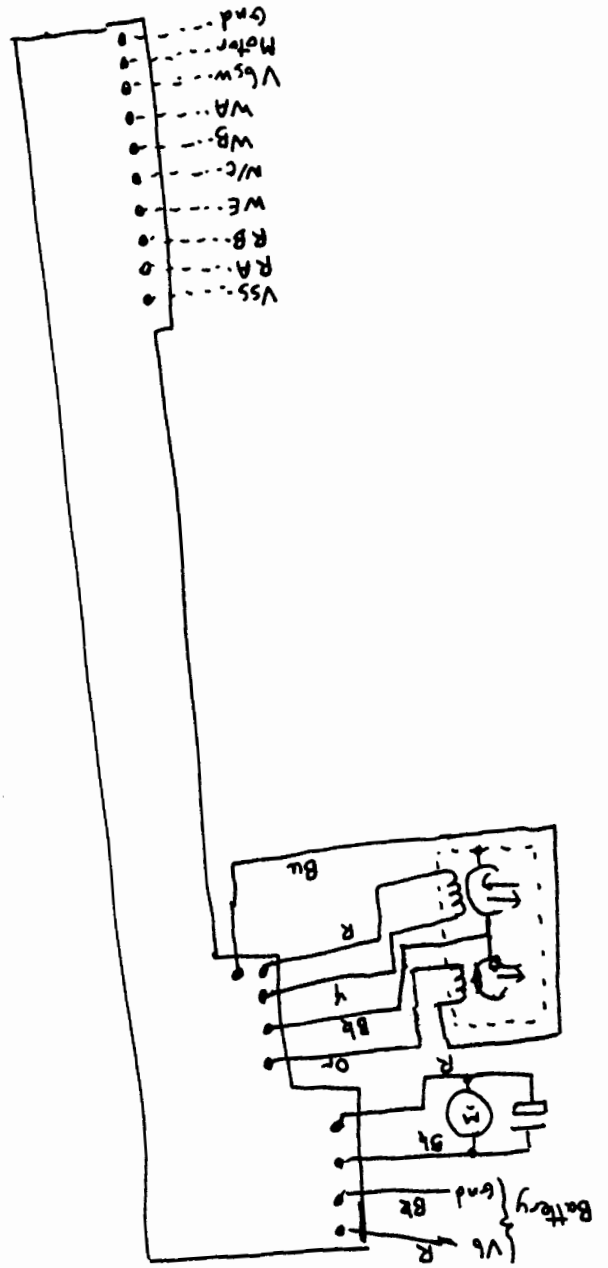
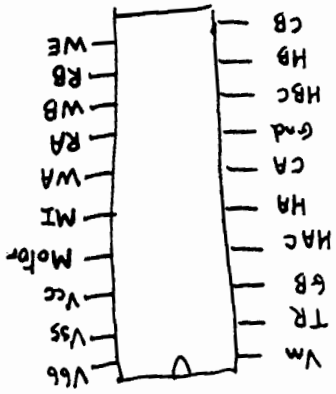
### ROM



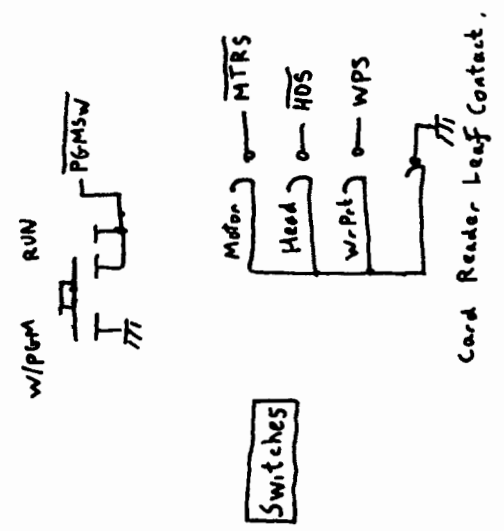
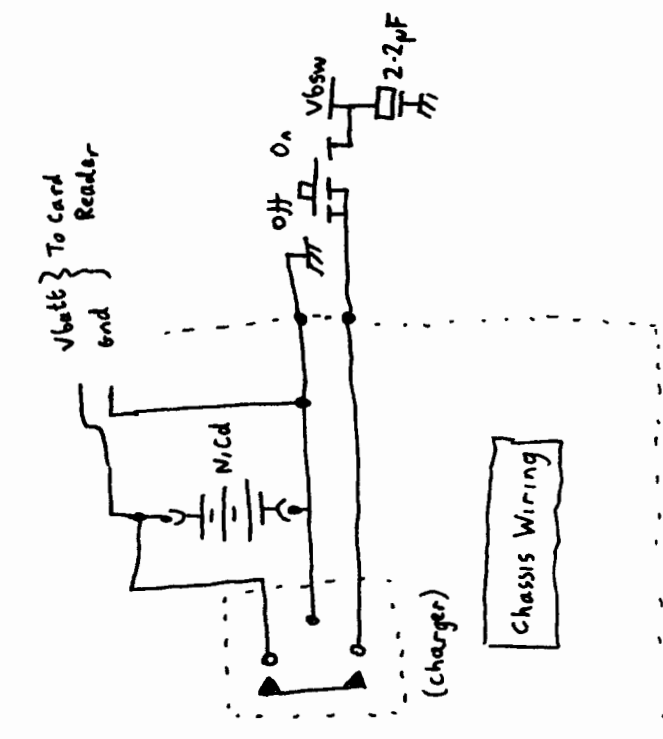
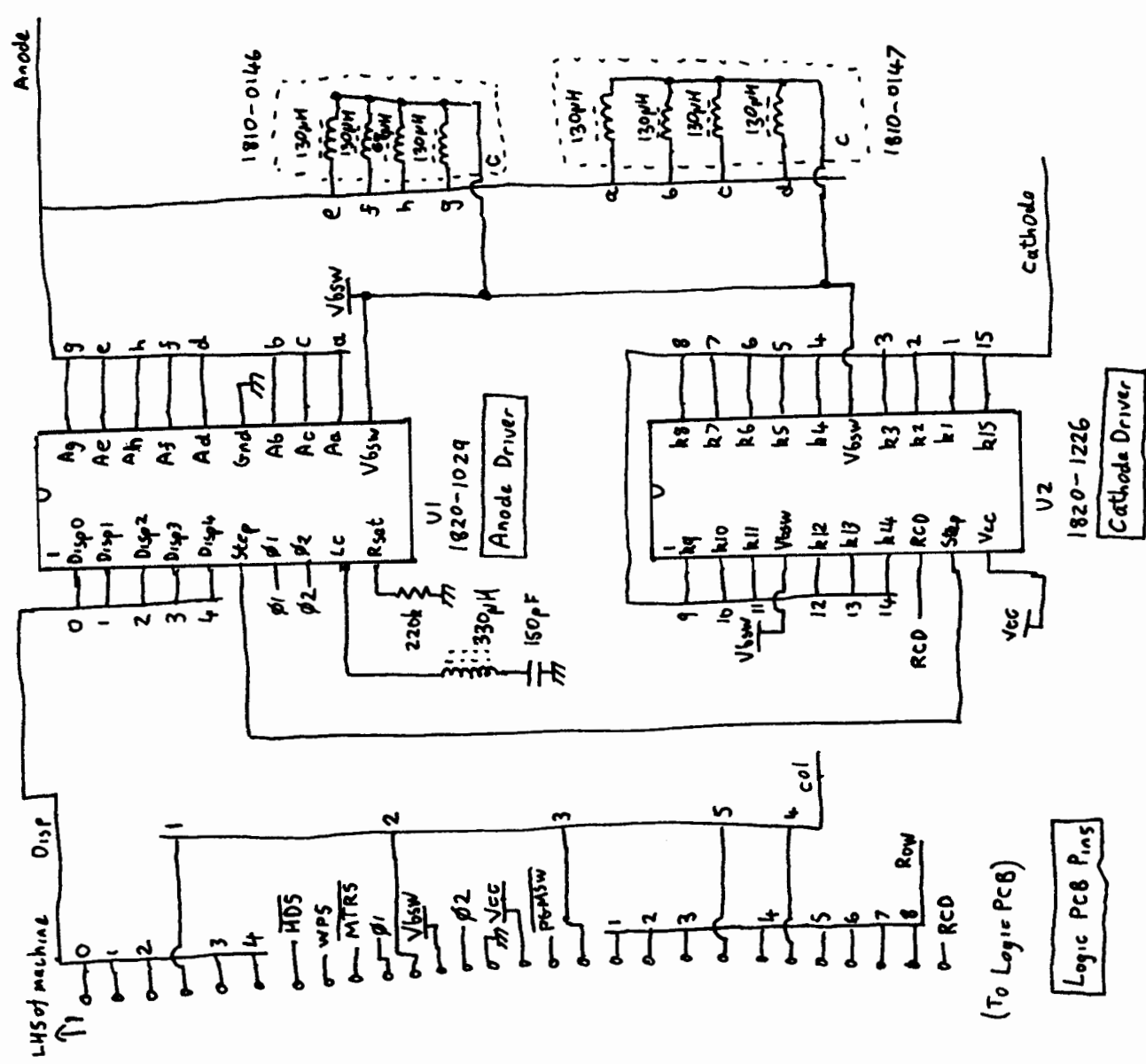
### Testpoints

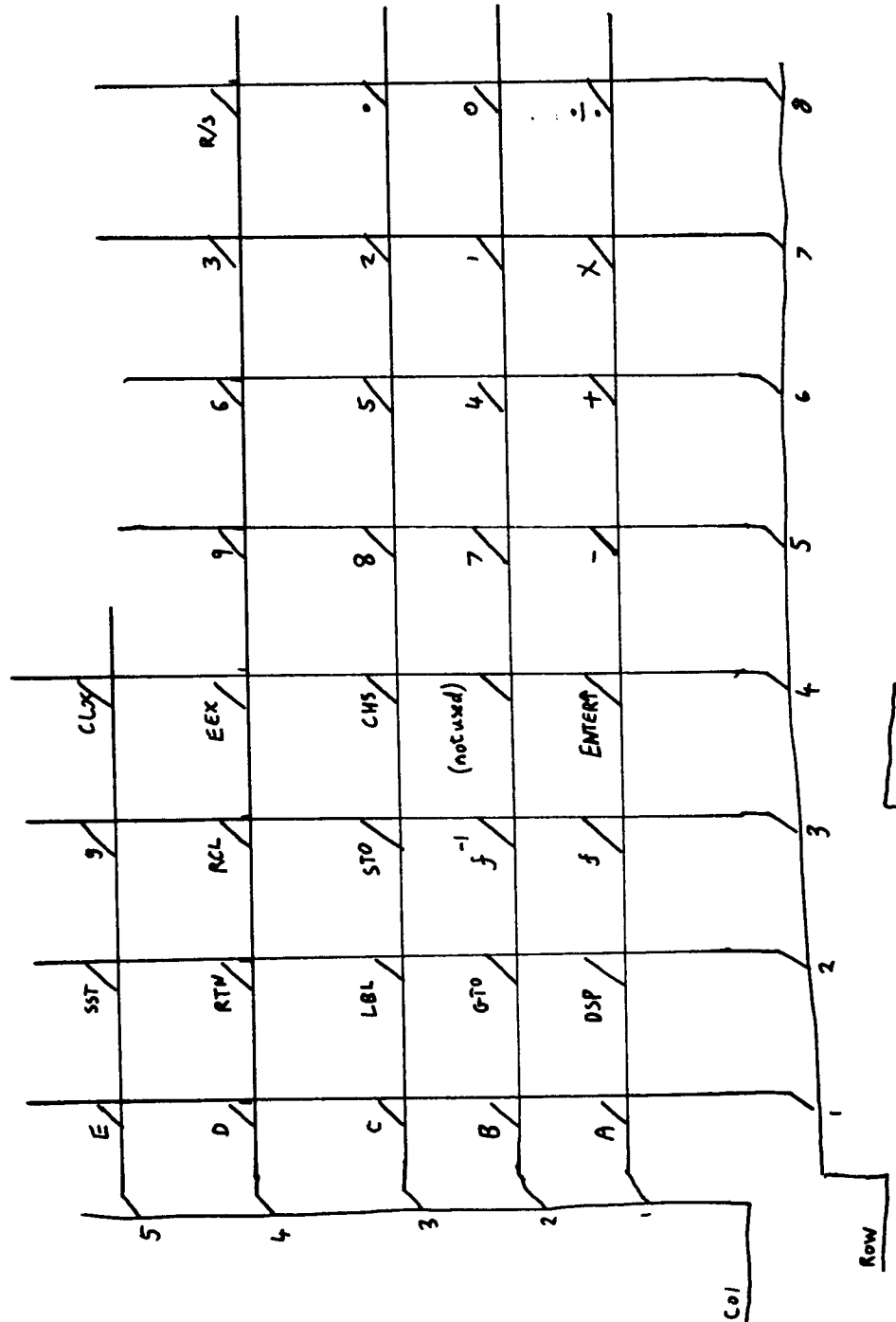
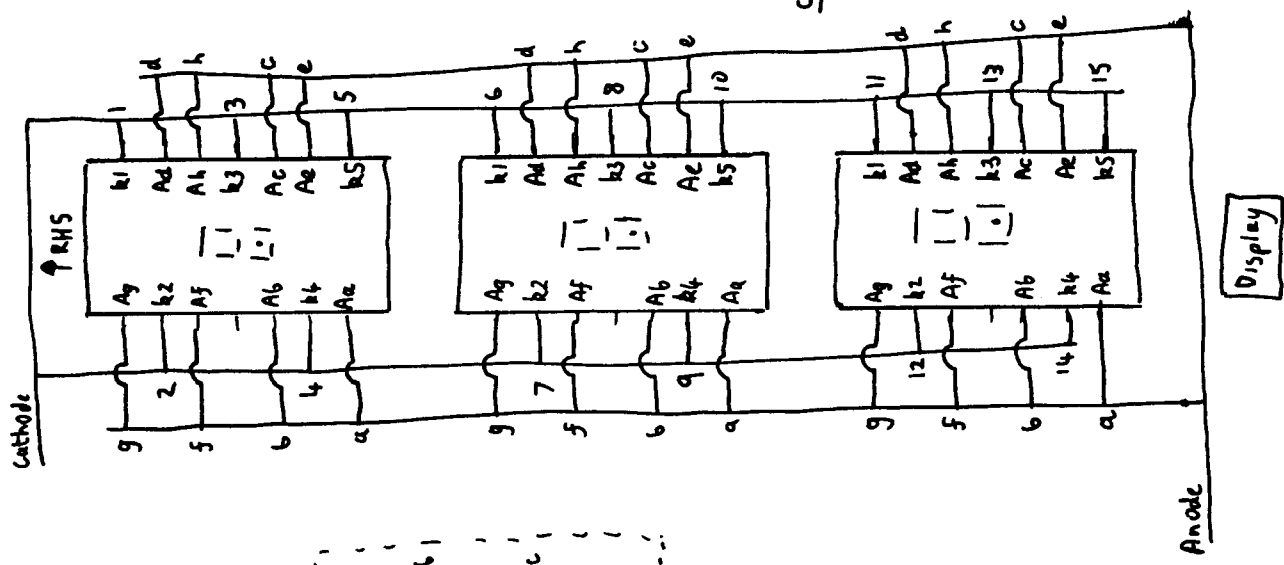
- Top ↑
- Sync
  - IS
  - IA
  - Vgg
  - $\phi 2$
  - $\phi 1$
  - Init
  - Data
  - WS
  - RCD

Sense Amp + Motor Control  
1826-0158

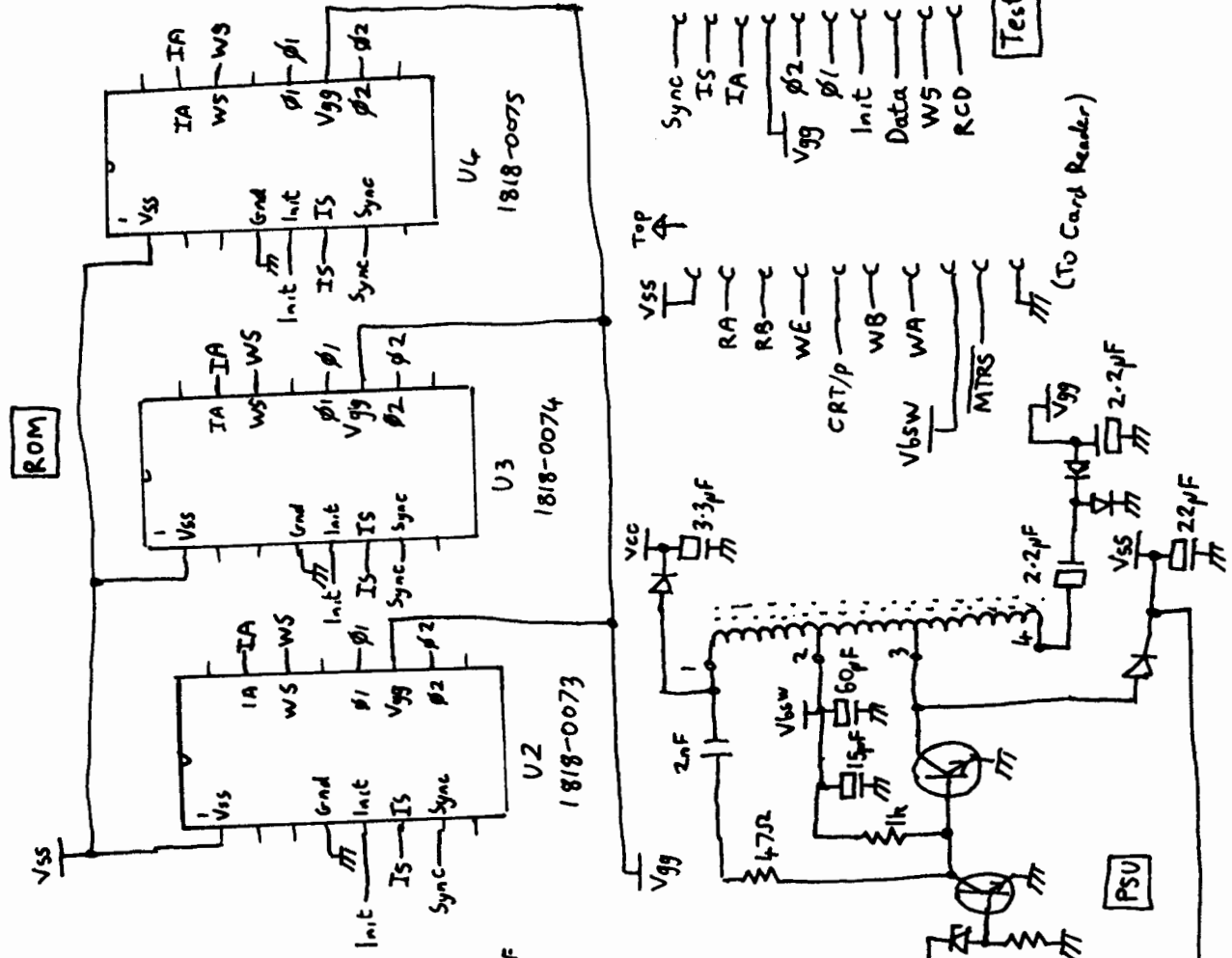
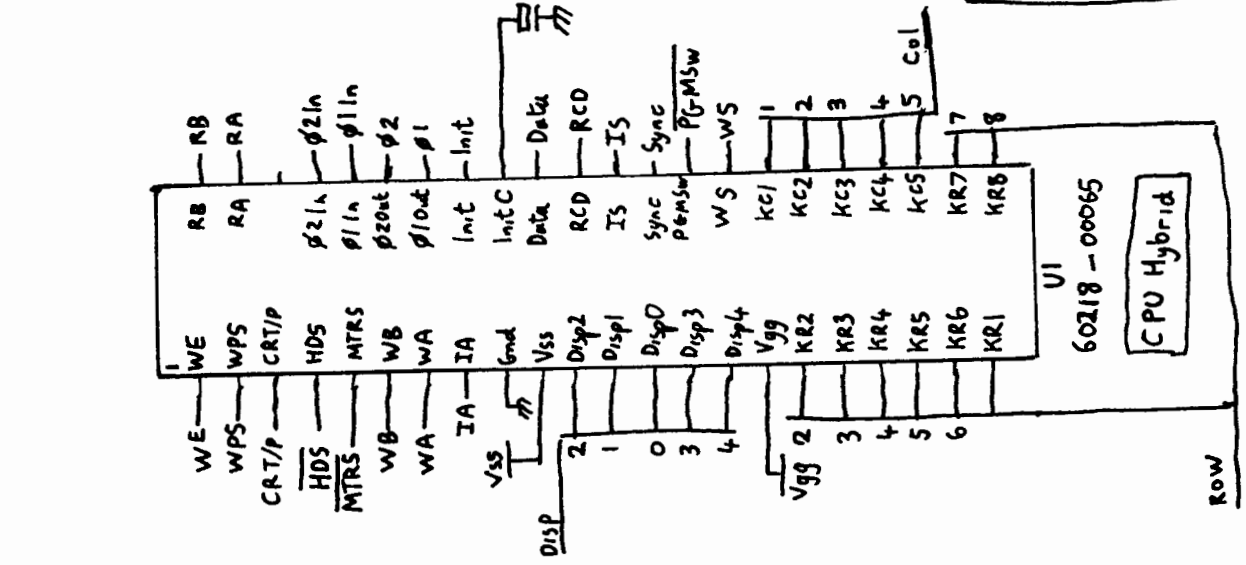
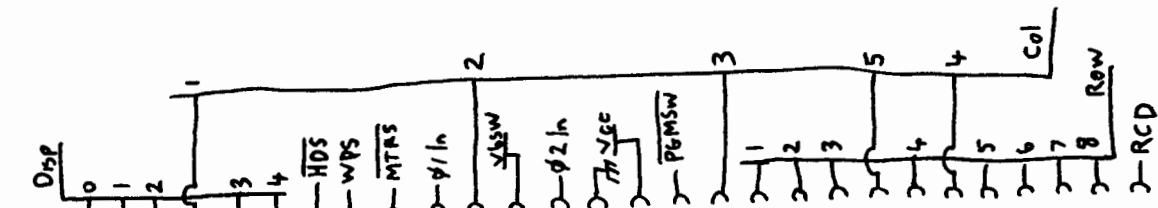


HP65 Card Reader





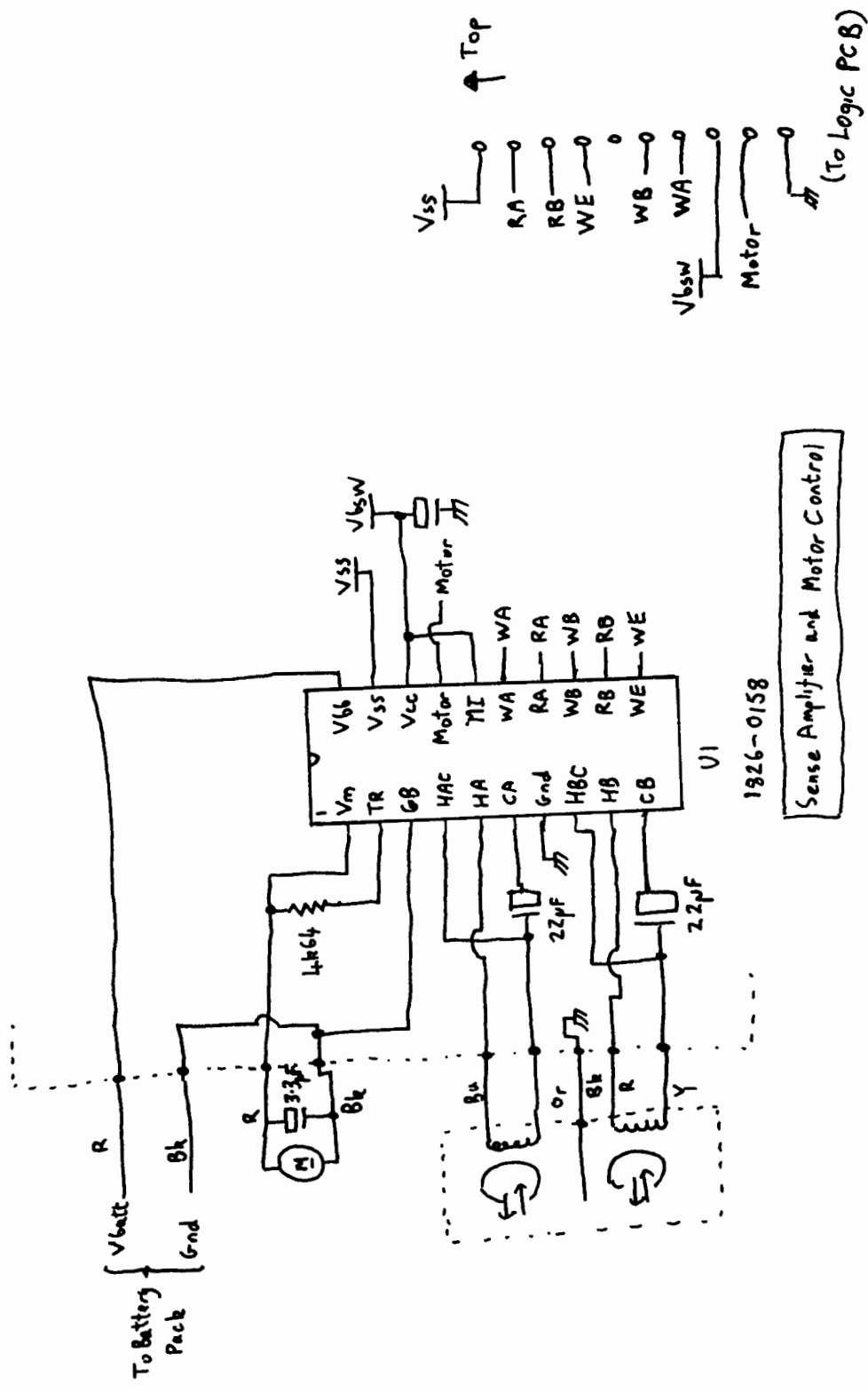
LHS of Machine



(To Keyboard/Display PCB)

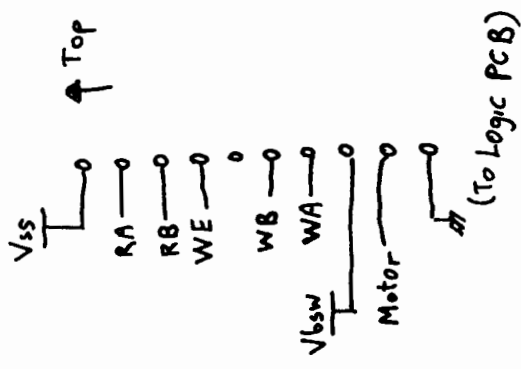
HP 65 Logic PCB

00065-60202



Sense Amplifier and Motor Control

1326-0158



Trigger: 05/05/01 15:33:04

1 ms/div  
20 V/div

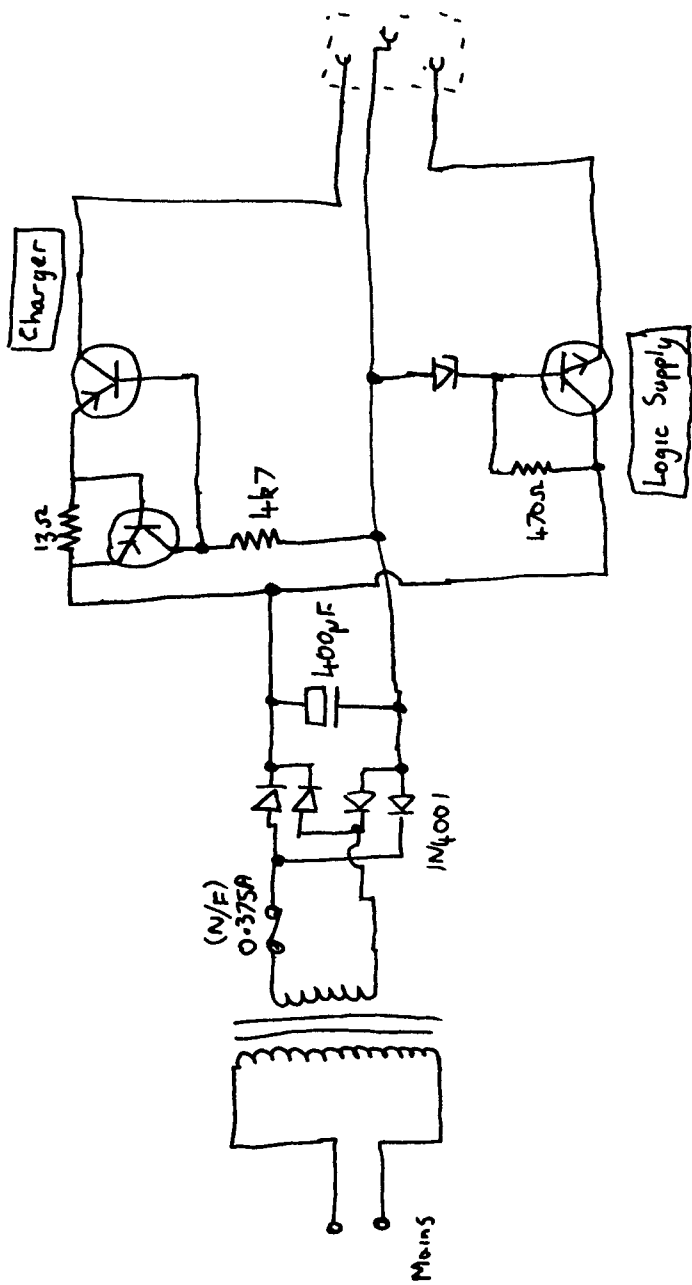
X-0: -0.06 ms  
X-1: -0.10 ms

TTL

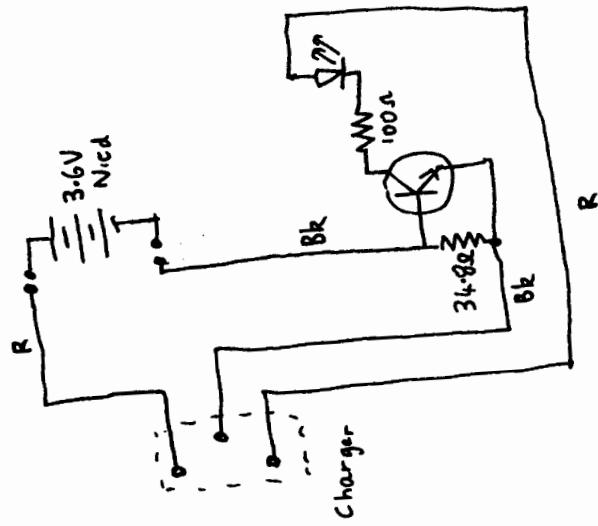


HP65 Card Read





82011A Charger



Classic Series Reserve Power Pack