

HP Integral RAM PCB Links

- W1: RAM Bank Sel \rightarrow A17 (256K)
W2: RAM Bank Sel \rightarrow 6nd (128K, 512K)
W3: RAM Bank Sel \rightarrow A14 (1M)

W4: A17 Not part of card Addr (256K, 512K, 1M)
W5: A18 " " (512K, 1M)
W6: A19 " " (1M)
W7: A17 part of card Sel Addr (128K)
W8: A18 " " (128K, 256K)
W9: A19 " " (128K, 256K, 1M)
W10: CAS link of U45 not fitted (128K, 256K)
Fit U45 if 256kbit DRAMs used (512K, 1M)

- W11 1D bit 2 = 1
W12 1D bit 1 = 1
W13 1D bit 0 = 1
W14 1D bit 2 = 0
W15 1D bit 1 = 0
W16 1D bit 0 = 0

128K (conjectured)

W2, W7, W8, W9, W10

W11, W12, W16 (1D 1110)
16 off 4164

256K (82925A)

W1, W4, W8, W9, W10.

W11, W15, W13 (1D 1101)
32 off 4164

512K (82927A)

W2, W4, W5, W9 U45 ('ALS157)

W11, W15, W16 (1D 1100)
16 off 41256

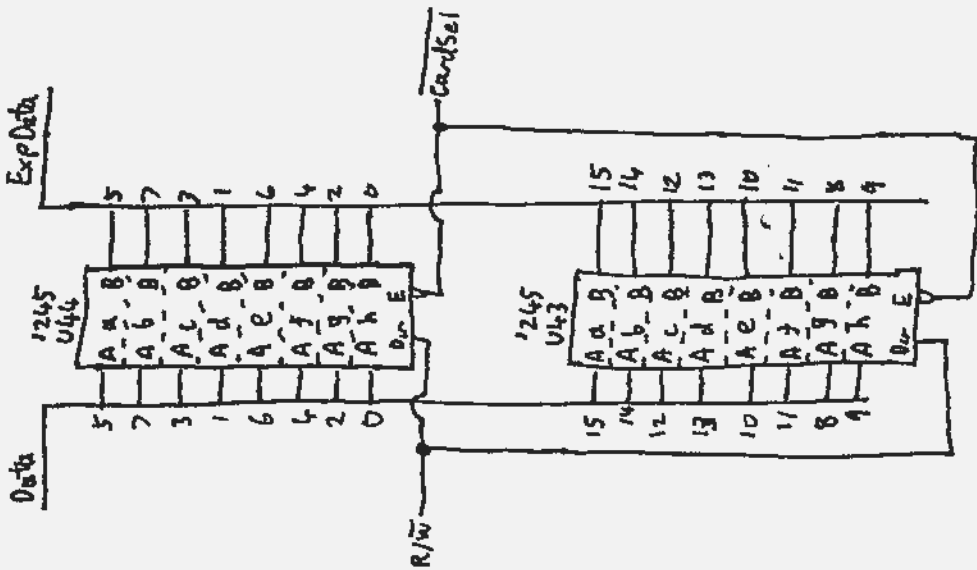
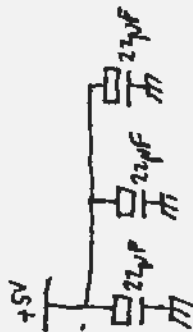
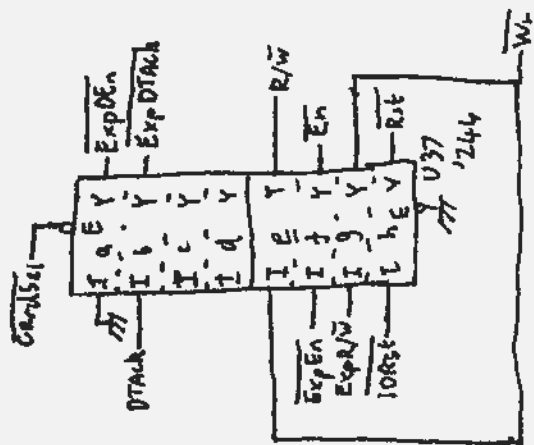
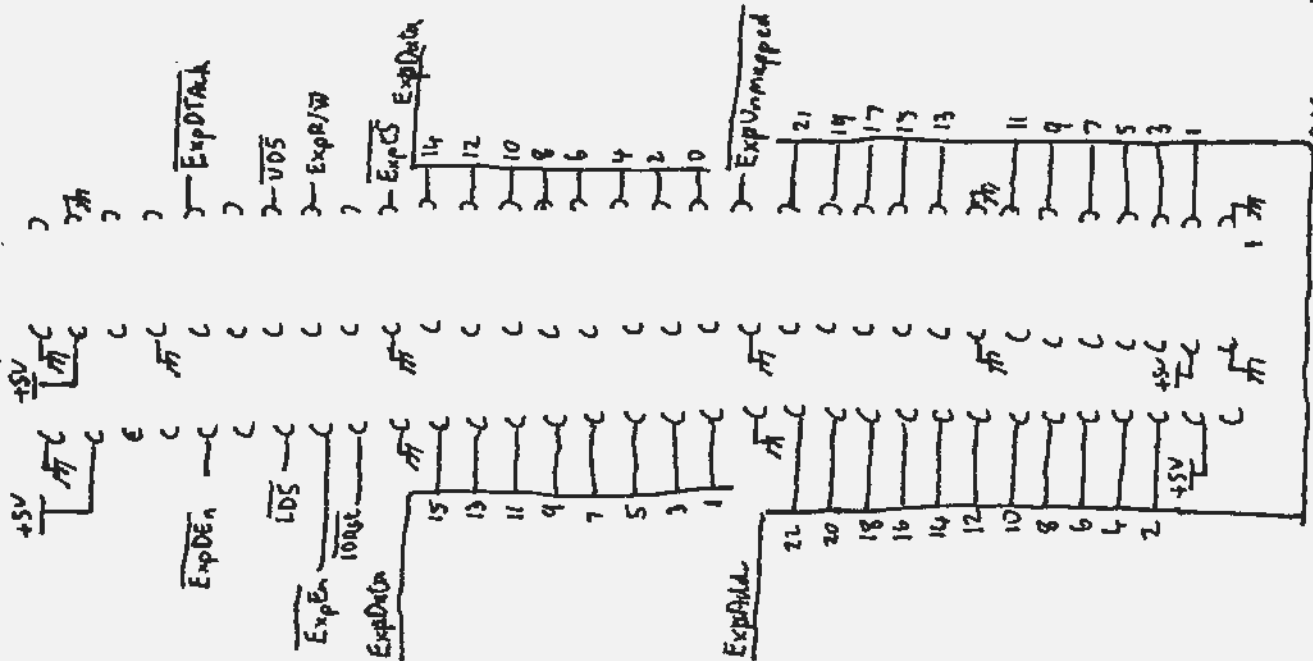
1M (82916)

W3, W4, W5, W6, U45 ('ALS157)

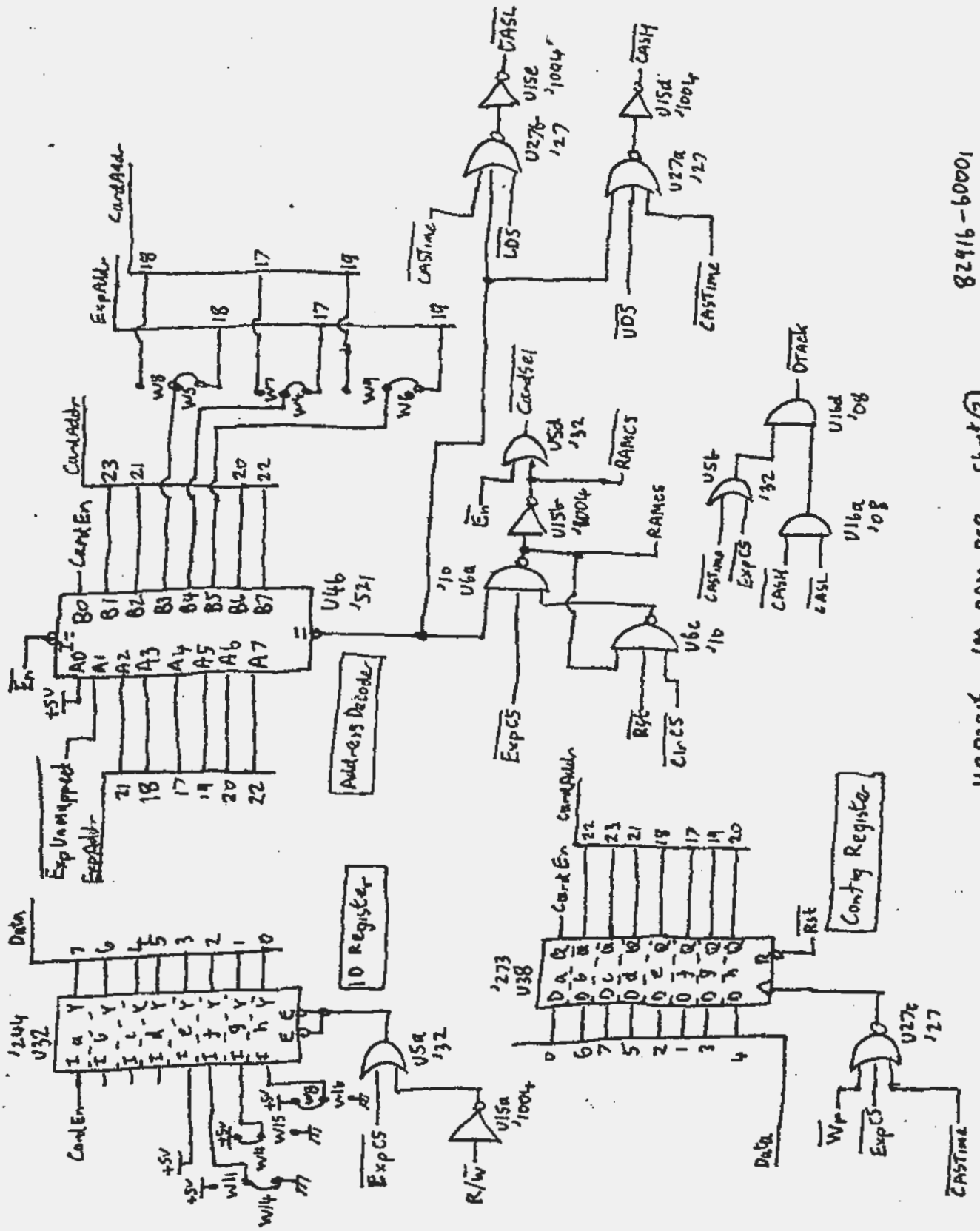
W14, W12, W13 (1D 1011)

32 off 41256

LHS of Machine

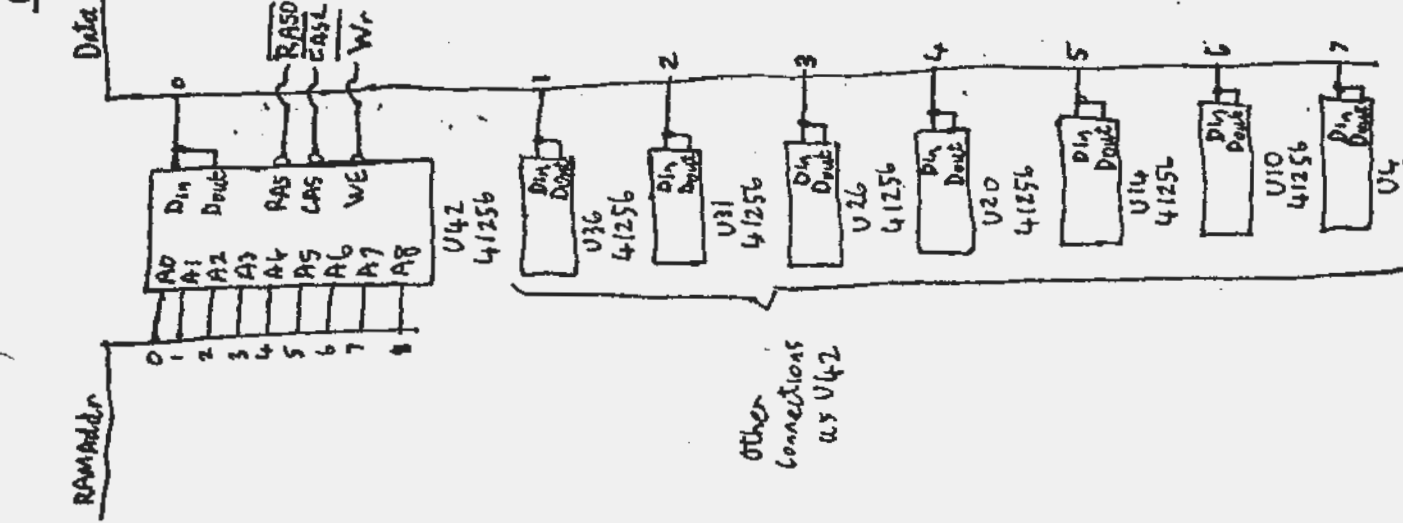
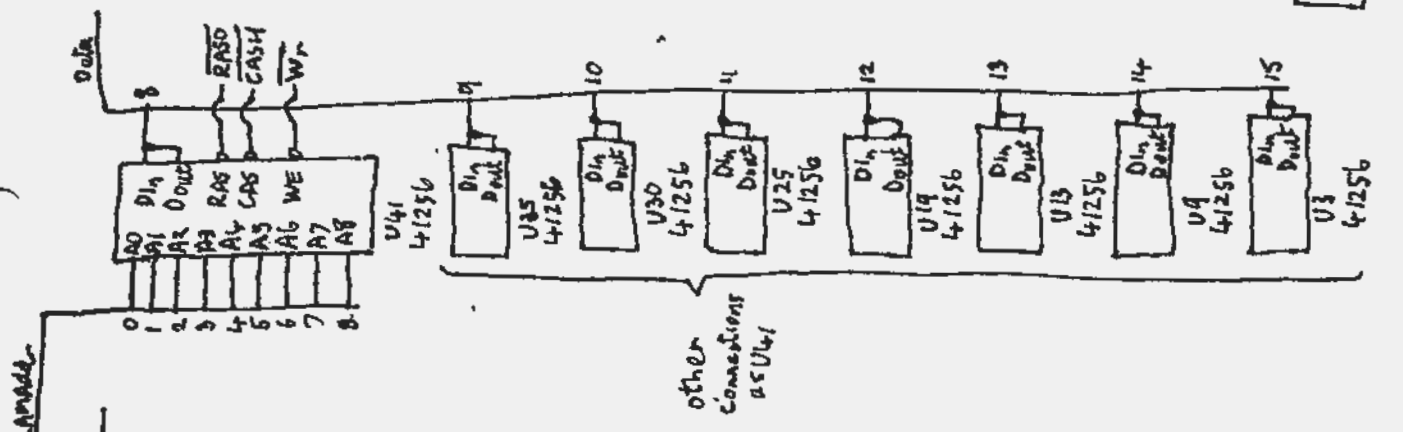
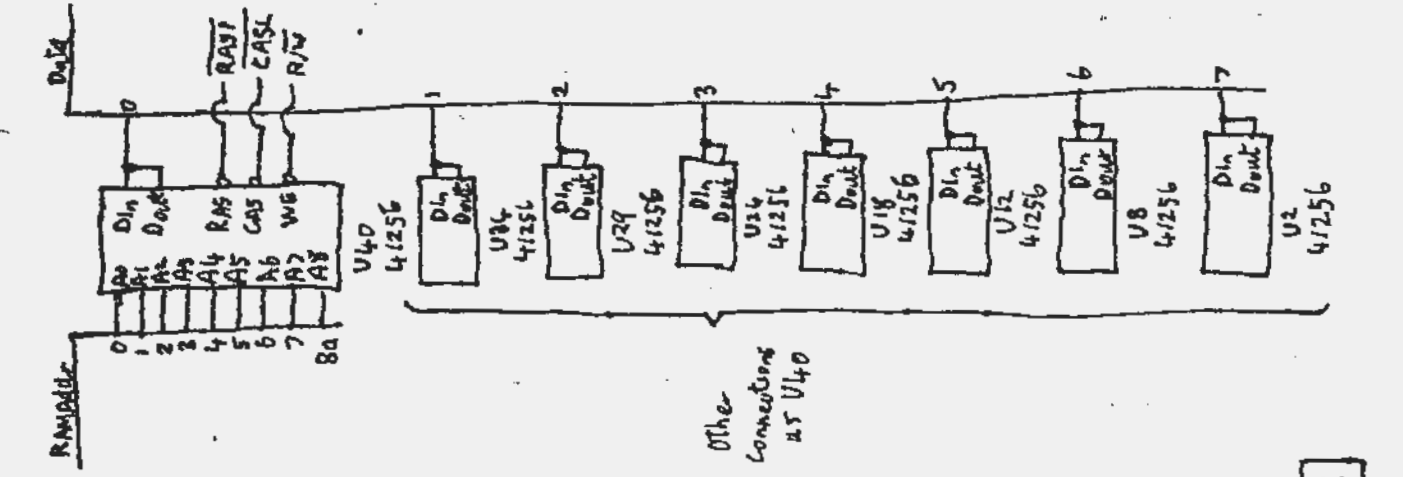
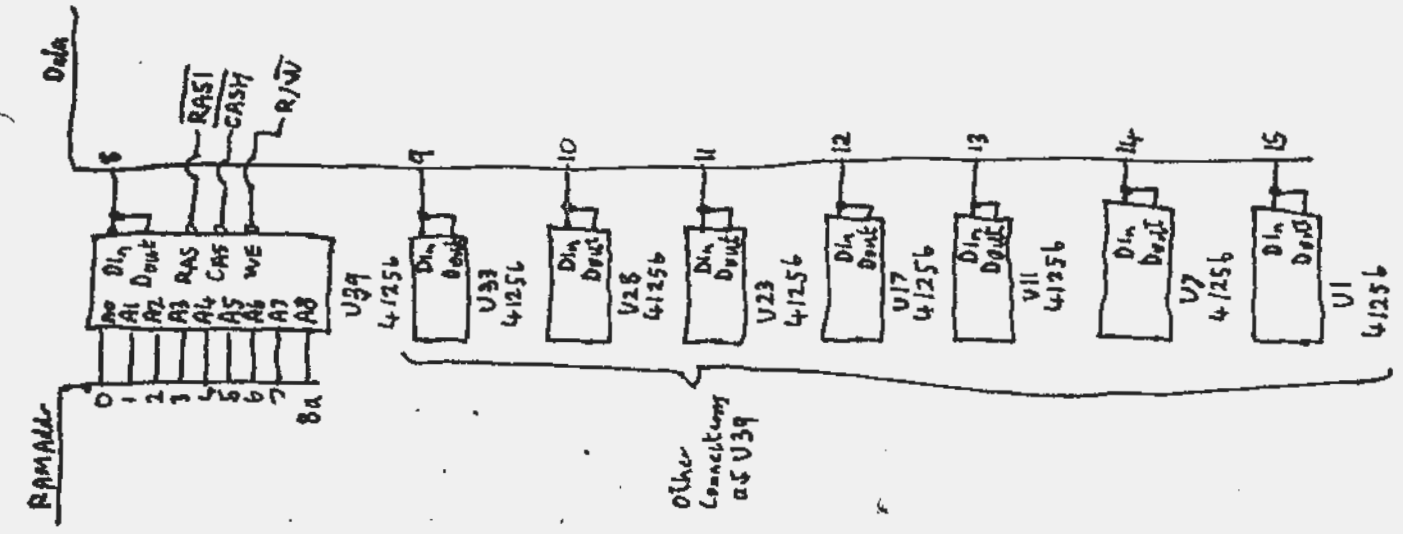


Data Buffer



82916-60001

HP 82916 IM RAM PCB Sheet 2



RAM